



A Newsletter for Employees of the University of Louisville Libraries  
Vol. 35, No. 1 ♣ February/March/April 2019

# The Owl

*"The Owl of Minerva takes flight only as the dusk begins to fall." — Hegel*

---

## HOW I SPENT MY SABBATICAL

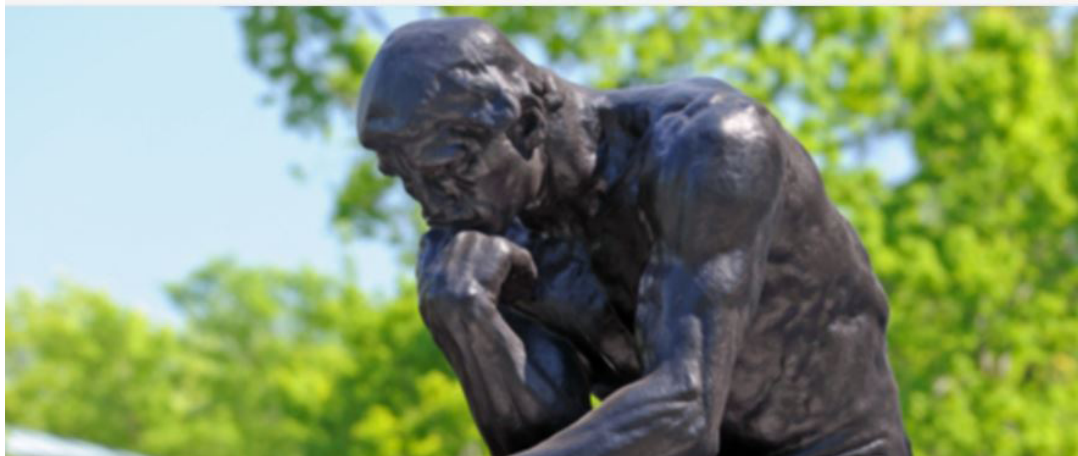
BY RACHEL HOWARD, DIGITAL INITIATIVES LIBRARIAN

---

A sabbatical is a benefit earned by faculty who have successfully gone through the tenure process by publishing; presenting; performing service for the libraries, university, profession, and community; and accomplishing their work duties. It consists of paid research leave for either six months or one year (though payment maxes out at six months' salary, so the yearlong option tends to be feasible only when outside grant funding can cover the rest). The purpose is to produce more research and creative activity, and avoid burnout, by stepping away from the daily schedule of tasks and meetings and concentrating on a larger goal.

Tenured faculty are eligible to apply for a sabbatical every seven years, and other units on campus adhere to this schedule fairly rigorously. Within the Libraries, sabbaticals tend to be rarer. I know my own reluctance to apply for one was due to a combination of guilt over asking colleagues to cover my work and uncertainty that I had a research topic worthy of six months of my time. After twelve years at UofL, five

**ThinkIR** The University of Louisville's Institutional Repository



of them post-tenure, I finally went for it. The timing felt right because the team to share the workload was the largest it had ever been in my time here: with Rebecca Pattillo on board as Metadata Librarian and Sarah Frankel in her position as Open Access and Repository Coordinator since 2016, I knew

that the daily work relating to Digital Collections and [ThinkIR](#) would be in good hands. Also, with the purchase of bepress Digital Commons software (which we use for [ThinkIR](#)) by mega-publisher Elsevier

in 2017, I finally felt I had a topic worth digging into deeply: researching the possibility of migrating out of the current system.

In order to move forward with this research, I also realized we had to assess how current and potential users felt about the repository we already had—did it, and the services surrounding it, serve their needs? Do they even know what it is and what it can do? I also wanted a way to formally capture the expertise of colleagues at other institutions, whose advice I’ve typically sought by posting inquiries on listservs and by directly contacting the ones I know well. I decided to conduct two surveys, which meant going through a lengthy approval process with the Institutional Review Board (IRB) – a level of bureaucratic red tape that I would not have had the energy to deal with on top of daily tasks, so sabbatical was the perfect time to tackle it.

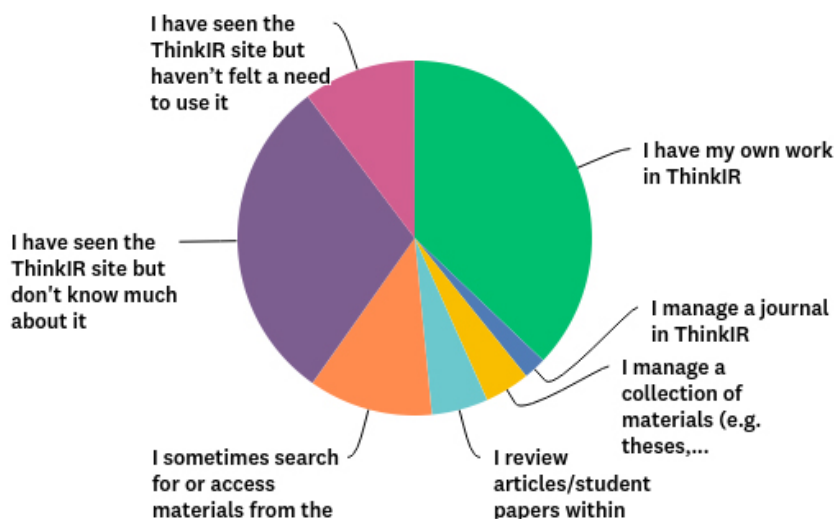
The first survey, “Scholarly Works by the UofL Community: Exploring Their Creation, Dissemination, and Reuse,” employed stratified sampling and snowball sampling, as well as the emails of known users, to reach faculty, staff, and students in every department of the university. It garnered 201 responses from a useful cross-section of campus stakeholders, which I then analyzed and coded and plan to

delve into deeper using focus groups. I discovered that our stakeholders are generally supportive of open access to research and generally appreciative of the Libraries’ efforts in this regard, but nearly half of them were unaware of ThinkIR (thus the survey itself served as a form of outreach), and many were skeptical of the university’s ability to sustainably fund open access publishing.

I sent the second survey, “Assessing Repository Software for Future Migration,” to our peer institutions (the [benchmarks](#) to which UofL compares its goals and performance), as well as to the [publicly-funded universities in Kentucky](#), and to members of the Atlantic Coast athletic conference (ACC). I received 22 extremely helpful responses about the participants’ experiences with different repository software systems and migrations. A series of questions about staffing at other institutions exposed what we already knew (and what the internal survey hinted at): that we are attempting to provide the same services everyone else does, with significantly fewer people.

It probably goes without saying that sabbatical research also entails a lot of reading on the topic. I needed to garner enough background information to figure out what to ask on the surveys, and then needed to compare my findings with others’ research. I read hundreds of articles, books, dissertations, reports, and conference proceedings during the six-month time period. Much of what I read

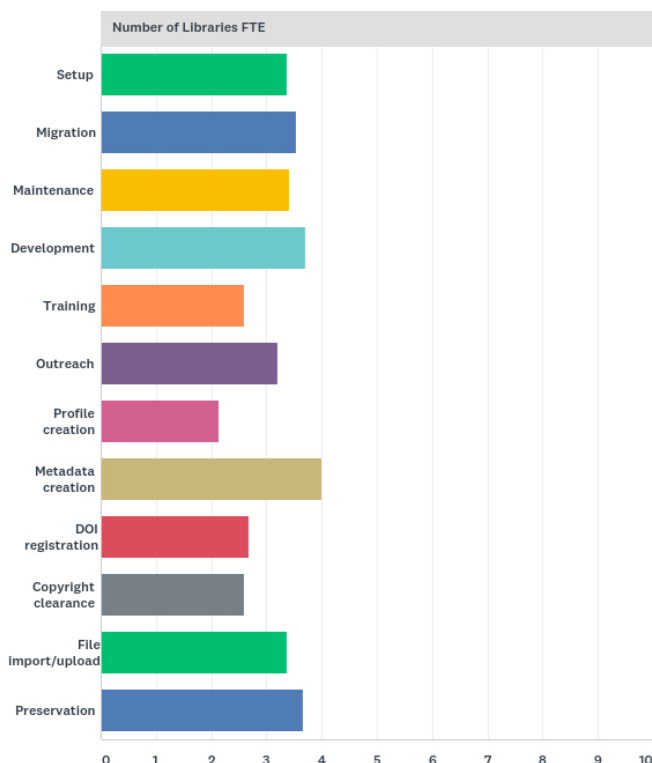
### Q9 What have you primarily used ThinkIR for?



was published in 2018, and I certainly would not have had time to keep up with it all while working full time. I also tackled a backlog of articles I'd downloaded, bookmarked, or otherwise flagged but did not find the time to read until sabbatical.

Since I have never pursued a Ph.D., I have never spent this much concentrated time researching any

Q26 Approximately how many personnel work with the repository system(s)?



topic this thoroughly. It can be lonely, frustrating, and overwhelming on some days, while also relaxing, invigorating, and productive overall. Especially given that my research was about scholarly research, I feel that it was important for me to have this experience.

I synthesized my literature review and survey findings into a lengthy report, "What's Next for ThinkIR? Exploring UofL Scholars' Needs and Service and Software Options," which has been shared in portions or its entirety with various library employees and committees whose work it impacts. I also submitted an article for

publication in the *Journal of Librarianship and Scholarly Communication*, an open-access, peer-reviewed publication built on open source software.

My findings, in brief, are that ThinkIR's visibility and value to stakeholders could be enhanced through service and policy modifications and strategic investment in partnerships and professional development. Its capacity to address additional stakeholder needs and open access principles remains limited by its current software. Fortunately, new and improved open source options for repositories and their related functions now exist. UofL will need to commit to hiring and sustaining appropriate staffing in order to move ThinkIR forward in a responsive, responsible way. I also discovered that sabbatical leave is worthwhile to me as an individual and, I believe, the institution, because it moved my research and planned service improvements much further and faster than I could have accomplished otherwise.

The Owl is published six times a year as an online PDF publication by the University of Louisville Libraries, Louisville, KY 40292.

There is a combined June-August "summer" issue and a December-January "winter" issue.

Co-Editors: Robin Harris (robin.harris@louisville.edu, 852-6083) and Amy Purcell (apurcell@louisville.edu, 852-1861).

Editorial Board: Matt Goldberg, Anna Marie Johnson, Jessie Roth.

Book Editor: Chris Poche. Layout: Amy Purcell.

© 2019, University of Louisville Libraries. The Owl on the Web: <http://owl.library.louisville.edu>

The Owl's purpose is to promote communication among the various libraries in the UofL system.

Deadline for publication is the 21st of each month preceding publication.

Opinions expressed in The Owl are not necessarily those of the University Libraries or the University of Louisville.



# Library and Department News

## ARCHIVES & SPECIAL COLLECTIONS

### *Community Engagement*

Heather Fox served as co-presenter for “Louisville Latinx Oral History Project: Creating Visibility, Lifting Voices and Empowering People through Documenting Narratives of Louisville’s Latinx Community” at the [Engaged Scholarship Symposium](#) on March 7 in the Shumaker Research Building.

### *Let’s Recycle!*

Tom Owen has joined Ekstrom’s Sustainability Leader, Sarah Drerup, to help promote the cause. They planned recycling training and discussion sessions in March and April. Tom says the two of them are determined to receive an award from the International Institute for Recycling Educator Education ☺ as “Best in Our Class” in Ekstrom Library.

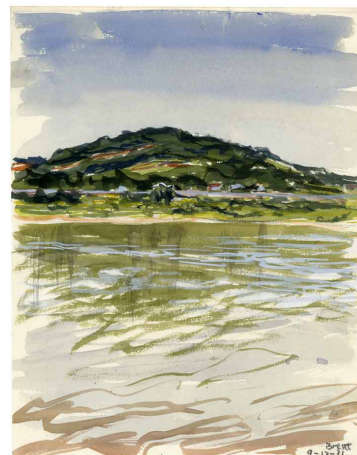
### *[Futures of Handwriting](#)*

ASC is partnering with several units across campus to host The Futures of Handwriting Symposium with events in the Chao Auditorium, April 12. Heather Fox is Chair of the “Scriptural Aesthetics” panel discussion. In addition, there will be a handwriting exhibit in the Kain Gallery, Rare Books.

### *AFLOAT*

[AFLOAT](#) is a series of community-wide events celebrating life on the Ohio River and the River itself. Heather Fox participated in the initial AFLOAT planning; Heather and Elizabeth Reilly installed an exhibit in the Kain Gallery, Rare Books. And Tom Owen will be part of a three-person AFLOAT panel discussing the 1937 flood, April 2 at 6:00pm at the Frazier History Museum.

*Brent, Kentucky by Harlan Hubbard*



### *Retirement*

Pam Yeager is retiring from UofL on May 23. She has been the primary contact for all who enter the ASC research room since 2011. Beyond her reference duties, Pam was an excellent history sleuth and enjoyed tracking down the identity of many of our mystery photos. She also cleaned up and updated several essential databases used in ASC. Pam will be sorely missed!

## EKSTROM LIBRARY

### **Dean’s Office**

#### *Third Floor Renovation*

Information about the renovation of Ekstrom’s third floor is available here: <https://wp.me/p1uJ9h-1DI>

### *Strategic Planning Group Includes Five Librarians*

Five Libraries personnel have been chosen to work on the University’s strategic plan: Rob Detmering



and Rebecca Pattillo are on the “Learn” group; Tom Owen and Fannie Mae Cox are part of the “Invest” group; and Melissa Laning is on the “Work” group. It’s terrific that these individuals have volunteered their time to serve as representatives of the Libraries for this pivotal research effort.

### *Staff Rewards and Recognition Program*

As a follow-up to the Staff Development Committee implementing a Rewards and Recognition program for the University Libraries, Carolyn Dowd met with UofL’s new Director of Employee Development and Success, Brian Buford, last week to discuss professional development needs. As co-chair of the “Work” group in the University’s strategic planning, he is positioned to influence policy recommendations, and will be working with Melissa Laning in this effort. He is sympathetic to staff concerns and planning to attend a Libraries staff meeting in April.

### *Welcome, Riley!*

Riley (Cantrall) Sumner started in the Hospital Librarian position on January 3, 2019. Riley received her MLS from UK and was most recently working as Assistant Archivist for the John G. Heyburn II Initiative at UK. She previously worked as a staff assistant at the UK Med Center Library and was a student assistant for three years at Kornhauser.

### *Welcome, Renesha!*

Renesha Chandler accepted the Diversity Residency position, effective January 14, 2019. Renesha also received her MLS from UK, and has worked since 2011 at the Louisville Free Public Library as a Youth Services Library Assistant (2014-2018) at the Newburg Branch, and as Library Clerk/Library Assistant (2011-2014) at the Shawnee Branch.

### *Farewell, Lauren. . .*

Lauren Robinson resigned from her position as Emerging Technologies Librarian at Kornhauser Library, effective February 7, 2019 to accept a position as Medicine Liaison Librarian at the UK Med Center Library. During her 2 ½ years in her current position, Lauren redesigned the Kornhauser website and implemented a number of changes to the library’s technology environment.

### *Congratulations, Ashley!*

Ashley Triplett has accepted the Student Engagement Coordinator position in Ekstrom Library. Ashley will serve as a liaison to Admissions, Enrollment Management, the Student Success Center, and Student Affairs. She will assist in coordinating Ekstrom Library’s programming and evaluate library policies and procedures to advance student success and retention efforts. Additionally, Ashley will continue to serve on the communications team, manage social media and marketing efforts, and handle the onboarding of student assistants into the library. Ashley will report directly to Bruce Keisling in this role, although she will continue to work closely with all departments in the library.

Ashley received her MA in Anthropology at the University of Louisville in 2018 and is currently working on her MS in Quantitative Research Methods in Education at the University of Kentucky. Ashley had a large role in transforming the user service experience following the first floor renovation. Ekstrom Library Director Bruce Keisling is “delighted to have Ashley serve in this new role and confident that she has the vision to expand our efforts in supporting student success and retention.”

### *Good Luck at IU, Anna Marie!*

Anna Marie Johnson has accepted the position of Head, Scholar’s Commons at the Indiana University

Wells Library in Bloomington. Her last day at UofL will be May 2, 2019. Anna Marie began her career at UofL in 1995 as Reference Librarian and became the Team Leader for Information Literacy in 2001. In 2011, Anna Marie became Head, Reference and Information Literacy Department, now known as Research Assistance and Instruction. In 2010-2011, she also served as Interim Director of Ekstrom Library. Best wishes to Anna Marie in her new position!

## Office of Libraries Technology

### *Shibboleth Login Interface*

OCLC has finished the testing of WMS (KLG instance). It is planned to test on other instances on April 2, 2019. After that a switching date will be decided. The authentication to EZproxy will be switched to Shibboleth at the same time with WMS.

### *Server Hardware Upgrade*

A big THANK YOU to Adam and Sahab! They have successfully replaced one of the three server hosts (hardware). Along the way, there were many unexpected issues and problems, they worked diligently in tackling the issues one after another. Now the new hardware is in place. The virtual machine center will be in a better shape after they finish upgrading the backup storage and add some more memory.

### **Updates W102 and W103**

The instructor stations in W102 and W103 will be upgraded on April 3, 2019.

### *Staff PC Upgrade*

About 58 staff PCs will be replaced this Summer. Please stay tuned for further information if your PC is on the list to be upgraded.

## **LAW LIBRARY**

### *Phone Booth*

The Law Library installed a new telephone booth in the first floor reading room, to provide a private space to take calls without disturbing others. Although initially somewhat confused by the booth, students now love it!

### *United States Supreme Court Briefs Arrive!*

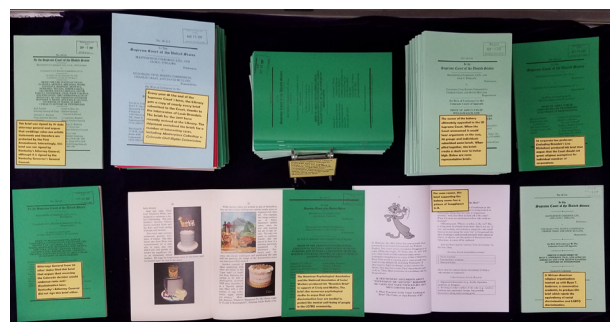
A temporary exhibit in the reading room commemorated the annual arrival of the United States Supreme Court briefs, with a selection of representative briefs from the Masterpiece Cakeshop case. <https://library.louisville.edu/law/blog/home/Masterpiece-Brief>

*Fun Fact: Fewer than ten law school libraries receive paper copies of the briefs, and we are one of those, thanks to the efforts of Justice Louis D. Brandeis, back in the 1920s.*



Above: Law Library student assistant Calesia Henson enjoying the privacy of the new booth!

Below: United States Supreme Court briefs from the Masterpiece Cakeshop case.





# NEW EMPLOYEE SPOTLIGHTS



## Riley (Cantrall) Sumner

**UofL position and department:** Hospital Librarian at ULH

**Hometown:** Florence, Kentucky

**Schools Attended:** UofL for my undergraduate degree in psychology and UK for my MLIS

**Significant Other/Family Members:** I just got married to my high school sweetheart, Chris, back in November.

**Pets:** We have two dogs, both hound mixes, named Millie and Hazel and a 13-year-old cat named Alan.

**Favorite Vacation Spot:** Panama City Beach, Florida

**Anything else:** The reason I chose to pursue a degree in library science is because of my time as a student worker at Kornhauser Health Sciences Library. I am so excited to be back where it all began!



## Renesha Chandler



**UofL position and department:** Diversity Residency Librarian, RAI

**Hometown:** Louisville, Kentucky

**Schools Attended:** University of Louisville, BS; University of Kentucky, MSLS

**Zodiac Sign:** Gemini

**Favorite Vacation Spot:** New Orleans & Washington DC (What can I say? I love seafood and museums!)

**Favorite Quote:** "Tomorrow I wake with second wind and strong because of pride. I know I fought with all my heart to keep the dream alive." -Tupac



## Thank You

Erin Gow  
Rachel Howard  
Mary K Marlatt  
Melissa Laning

Weiling Liu  
Jessie Roth  
The Owl Board

... for contributing to this issue of The Owl



I would like to thank Amber Willenborg for leading the development of our new Productive Researcher Portal for advanced researchers: <https://library.louisville.edu/researchers>. I would also like to thank everyone who contributed content and assistance with the site: Cassie Book, Kelly Buckman, Sarah Drerup, Terri Holtze, Anna Marie Johnson, Latisha Reynolds, and Bronwyn Williams. –Rob Detmering

I would like to thank my colleagues in Archives and Special Collections for making it possible for me to take sabbatical leave by ensuring that my desk shifts, service account, and daily, weekly, and monthly tasks were covered. Special thanks to Sarah Frankel and Rebecca Pattillo, and to Dwayne Buttler and Carrie Daniels for overseeing their excellent work in my absence. –Rachel Howard



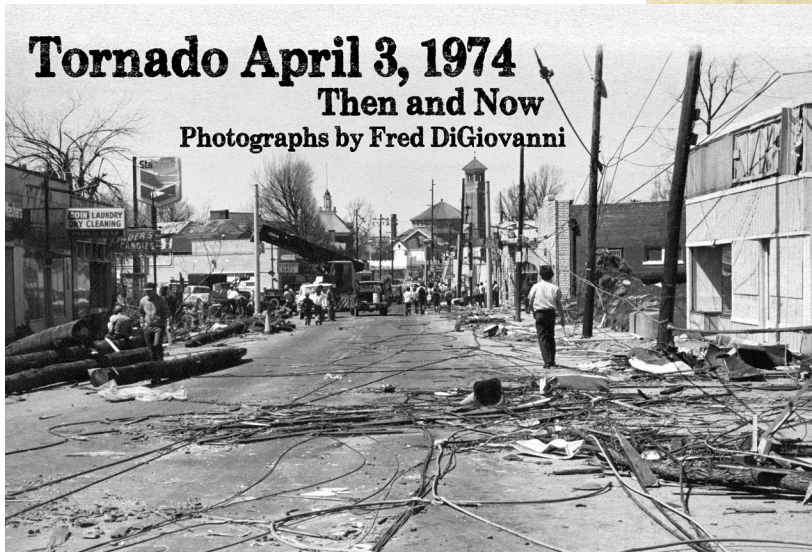
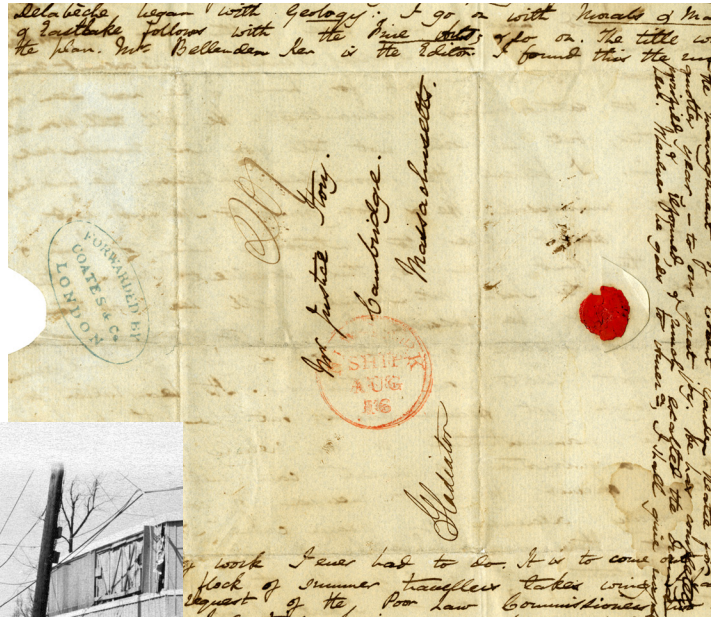
# Library Exhibits

## Archives & Special Collections

### Kain Gallery, Rare Books *Futures of Handwriting*

May - September, 2019

Harriet Martineau letter, 1840s.



Bardstown Rd at Alta Ave.  
Top: in 1974  
Bottom: in 2016

### Photographic Archives Gallery

April 3 - May 31, 2019

**Opening Reception**  
Wednesday April 3rd  
5:00-7:00PM

and

**Lobby Cases**  
**Lower Level East**  
The April 1974 Tornado  
From other ASC collections

## Headlines We'd Like to See ...



Record Breaking  
Attendance for New  
*Cats With the Dean*

**CITY OPENS NEW TRAILER  
PARK ON BRANDEIS  
BETWEEN THIRD & FOURTH**

Geology Department Finds Sink Hole on Shelby Campus  
*In a related story ...*  
Libraries Find New Remote Storage for Displaced 3rd  
Floor Renovation Books

Speed School Engineering Students Assist Louisville  
Water Company in Community Engagement Project -  
"It's time to take back Eastern Parkway!"

**#EasternPkwyProject**  
LouisvilleWater.com

Celebrities and CEOs Caught in College  
Admissions Scandal  
Finally! A Scandal that Doesn't Impact UofL!

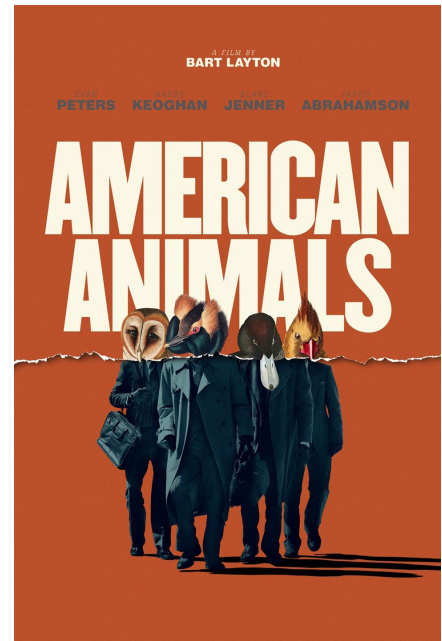


comes to Kornhauser  
to shoot new movie ...



**UofL Expands Sidewalk System  
to Accommodate Scooters**

Director's Cut *American Animals*  
Stolen from the SGA Collection



*Bed Pans and Broomsticks*



**These headlines were composed by members of The Owl Board for April  
Fools' Day. Any resemblance to actual events is purely satirical.**